

A veterinarian wearing a surgical cap and mask is looking through a microscope. The image is in grayscale with a blue overlay at the bottom. The microscope has '12.5 x' on the eyepiece and 'SHUTT 004' and 'ZEISS' on the body.

Veterinary Vision

PENRITH

A fully equipped ophthalmology referral centre with microsurgical operating facilities for extra-ocular and intra-ocular surgery

01768 877255 | info@veterinaryvision.co.uk | veterinaryvision.co.uk

Who are we?

Veterinary Vision operates a comprehensive ophthalmology referral service. We are fully equipped with microsurgical operating facilities for extra-ocular and intra-ocular surgery, including corneal graft, cataract extraction, intra-ocular laser surgery and retinal re-attachment surgery.

We have eleven ophthalmologists working across three centres. Emergency out of hours cases are seen at our Penrith branch.



Where are we?



PENRITH

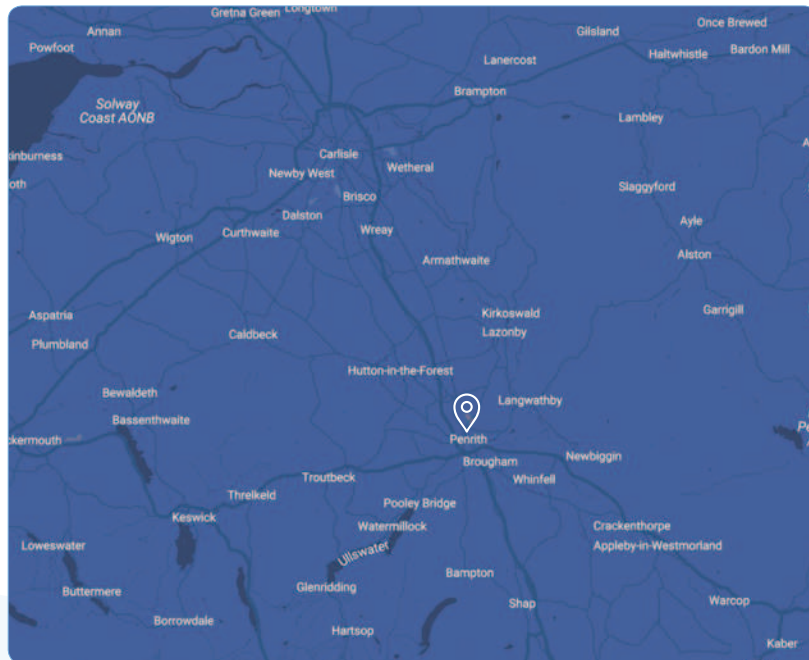
Gillan Way

Penrith

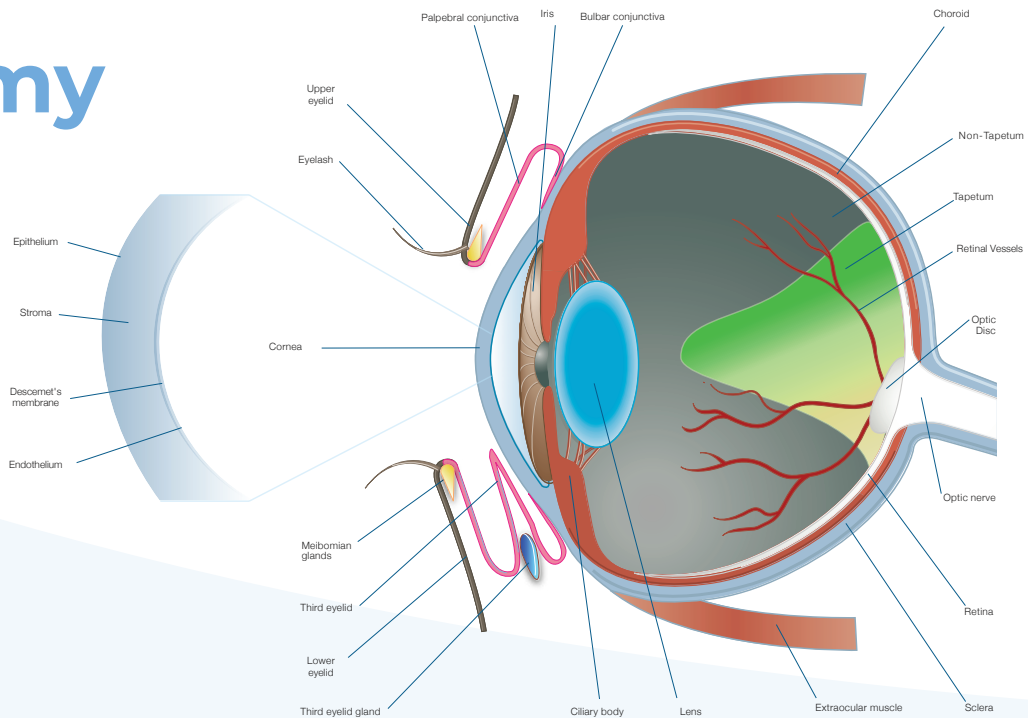
Cumbria

CA11 9BP

Directions to the clinic can
be found on the website
veterinaryvision.co.uk



Anatomy



STT & IOP

Species	Schirmer tear test 1 (STT1)	Intraocular pressure (IOP)
Dog	15-25 mm/min	10-25 mmHg
Cat	5-25 mm/min	10-25 mmHg
Rabbit	11-30 mm/min	15-23 mmHg
Horse	0-15 mm/min	16-30mmHg

Order of ophthalmic assessment



Obtain an ocular history

Examine from a distance

- Ability to negotiate obstacles
- Interaction with owner

Look for asymmetry

- Globe
- Orbit
- Eyelash direction
- Pupils & iris colour
- Ear & lip position

Neurological testing

- CNV & CNVII
- Menace response
- Pupillary Light reflexes (direct & consensual)
- Dazzle reflex
- Tracking response

Detailed examination anterior to posterior

- Eyelids
- Conjunctiva
- Cornea
- Anterior chamber
- Iris
- Lens
- Vitreal body
- Direct and indirect ophthalmoscopy of the fundus

Diagnosics

- Slit lamp biomicroscopy
- Tonometry
- Binocular indirect ophthalmoscopy
- Gonioscopy
- Ocular ultrasonography
- Refraction testing
- Colour pupillary light reflex assessment
- Electroretinography (ERG)
- Fundic photography



Extra-ocular surgery

We perform all types of eyelid surgery tailored to the individual needs of the patient.

- Cherry eye
- Distichiasis
- Ectopic Cilia
- Ectropion
- Entropion
- Extra-ocular neoplasia
- Macroblepharon
- Orbitectomy / Orbitotomy
- Parotid duct transposition graft
- Rhytidectomy (face-lift)
- Scrolled cartilage

Further information regarding these conditions can be found on our website: [veterinaryvision.co.uk](https://www.veterinaryvision.co.uk)

Corneal surgery

We are equipped with state-of-the-art operating facilities at each centre for corneal microsurgery.

- Corneal Ulceration
- SCCED (spontaneous chronic corneal epithelial defect)
- Keratomalacia (melting ulcer)
- Deep stromal loss and descemetocoele
- Corneal Sequestrum
- Foreign Body extraction

Further information regarding these conditions can be found on our website: veterinaryvision.co.uk

Glaucoma surgery

An elevated intra-ocular pressure (IOP) can rapidly lead to a loss of vision. Normal IOP values can be found under the STT and IOP tab.

Veterinary Vision offers surgical management options for the control of glaucoma, where medical management alone is likely to lead to a loss of sight. The procedures are designed to either increase aqueous outflow, or reduce aqueous production, and vary in complexity and cost.

- Non-invasive TSCP (Trans-scleral cyclophotocoagulation)
- Aqueous Shunt
- ECP (Endoscopic laser cyclophotocoagulation)

Further information regarding these conditions can be found on our website: [veterinaryvision.co.uk](https://www.veterinaryvision.co.uk)



Cataract surgery



Opacification of the lens can occur due to multitude of reasons including; genetic factors, infection, trauma and Diabetes.

Veterinary Vision has been at the forefront of cataract surgery in the UK. We have transformed the lives of thousands of pets and offer advanced micro-incisional techniques to allow for the implantation of a transparent prosthetic intra-ocular lens.

The success rate of cataract surgery in dogs is high with a positive visual outcome in over 90% of patients.

Detailed information about the peri-operative care and expected costs can be found on our website: [veterinaryvision.co.uk](https://www.veterinaryvision.co.uk)

Retinal surgery

Veterinary Vision is one of the only few centres in Europe capable of performing retinal re-attachment surgery including high-speed posterior vitrectomy.

Small retinal tears may be treated without entering the eye using our 532nm trans-pupillary laser system. Although these cases require an anaesthetic, there are no surgical incisions or sutures placed, and there is no post-operative discomfort. This procedure is available at all three centres.

Large retinal detachments can be realigned into a normal anatomical position by removing the vitreal body and replacing it with Silicone oil. The re-attached neurosensory retina is then 'welded' with an endo-laser to reduce the risk further detachment. Retinal re-attachment surgery is often performed in combination with lens extraction to prevent secondary cataract formation. This highly complex procedure is available at our Penrith centre.

Detailed information about the peri-operative care and expected costs can be found on our website: veterinaryvision.co.uk

01768 877255

info@veterinaryvision.co.uk

veterinaryvision.co.uk

How to refer

ROUTINE REFERRALS

If you have a patient that needs referral, please complete our online form:

[Online Referral Form](#)

Please include a copy of the clinical history and any laboratory information and photographs.

EMERGENCY REFERRAL

If the referral is an emergency please contact the office immediately on **01768 877255**.

Case Discussion

In order for us to provide the most accurate advice it is often useful to examine photographs of the eye. Images can be uploaded through our website or sent directly to info@veterinaryvision.co.uk

It can often be difficult to photograph an eye due to the reflective nature of the corneal surface. Please see our [Factsheet](#) or following page for useful information on how you achieve a clear image.



How to photograph an eye

It can often be difficult to photograph an eye due to the reflective nature of the corneal surface. The tips below may help you to achieve a clear image.

1 PREPARE THE ENVIRONMENT

- ⊗ Do not try to photograph the eye outdoors.
- ⊗ If using a digital camera enable the Macro mode
- ⊗ Leave the room lights on.

2 PREPARE YOUR CAMERA/SMARTPHONE

- ⊗ Make sure that the flash is switched ON.
- ⊗ Limit external light e.g. through a window by closing blinds/curtains.
- ⊗ If using an phone tap the screen to identify the focus point.

3. PREPARE THE PATIENT

- ⊗ Ask another person to hold the patient still.
- ⊗ Gently open the pet's eyelids using your thumb and forefinger.
- ⊗ Get the pet's attention, getting them to look directly into the camera.

4 TAKE MULTIPLE PHOTOGRAPHS

- ⊗ The eye should occupy the central third of the screen.
- ⊗ If you are too close the image will appear blurry.
- ⊗ Please photograph both eyes even if the issue is only in one eye.

5 EMAIL THE IMAGE

- ⊗ Always send the image at the highest possible resolution.
- ⊗ Please remember to put the pet name in the subject line and any information about the pet with contact details in the body of the email.
- ⊗ Please call 01768 877255 to confirm that the photographs have been received.

Factsheets

All types of medical and surgical management options are available at Veterinary Vision for the treatment of ocular disease.

We have produced a number of Factsheets covering a variety of common ocular conditions and FAQ's. These PDF documents are print-ready for vets and clients to use.

Further information regarding common conditions can be found on our website: veterinaryvision.co.uk



CPD

At Veterinary Vision we are committed to supporting the ongoing professional development of our referring clinicians. We run a varied programme of free online and in-person CPD seminars and events throughout the year at each of our clinics.

Due to the popularity of our CPD events it is important that you book in advance.

If you would like to be informed about our events, please register on our website:

[Register for CPD Updates](#)

or call 01768 877255.